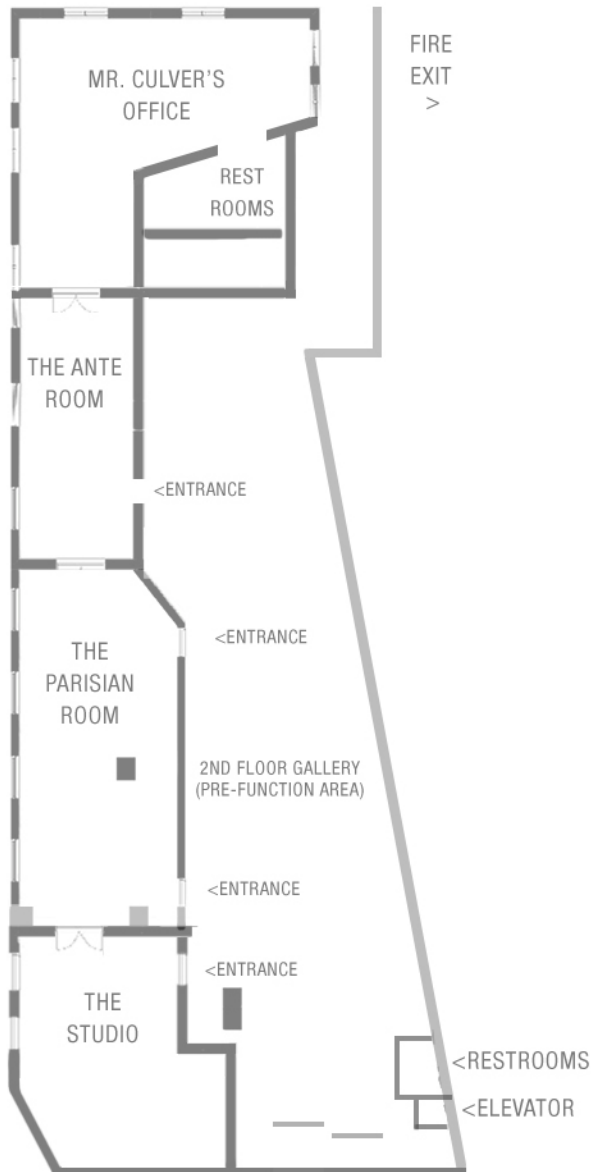


CULVER HOTEL - FLOOR PLANS - SECOND FLOOR



MR. CULVER'S OFFICE & THE ANTE ROOM

CAPACITY | 40 GUESTS THEATRE STYLE | 12 BOARDROOM
20 CLASSROOM | 30 SEATED | 660 SQ FT +/-

MR. CULVER'S OFFICE 400 SQ FT +/-
ANTE-ROOM 260 SQ. FT. +/-

THE PARISIAN ROOM

CAPACITY | 70 GUESTS THEATER & COCKTAIL STYLE
35 CLASSROOM | 60 SEATED | 850 SQ FT +/-

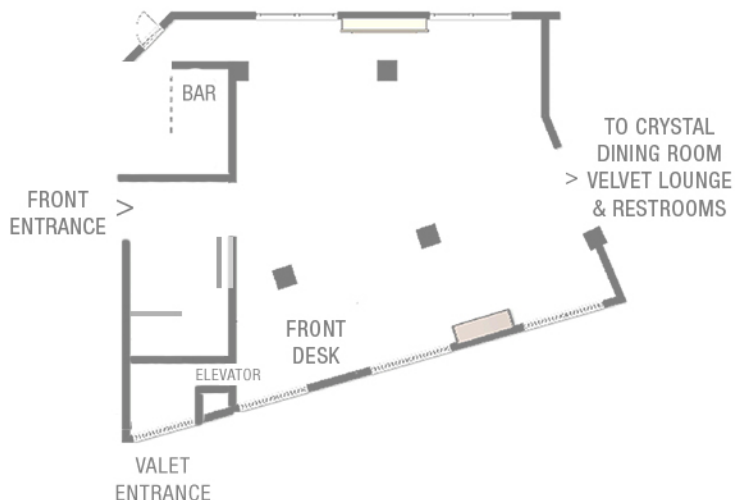
THE STUDIO

CAPACITY | 35 GUESTS THEATER & COCKTAIL STYLE
30 SEATED | 400 SQ FT +/-

CULVER HOTEL - FLOOR PLANS - FIRST FLOOR

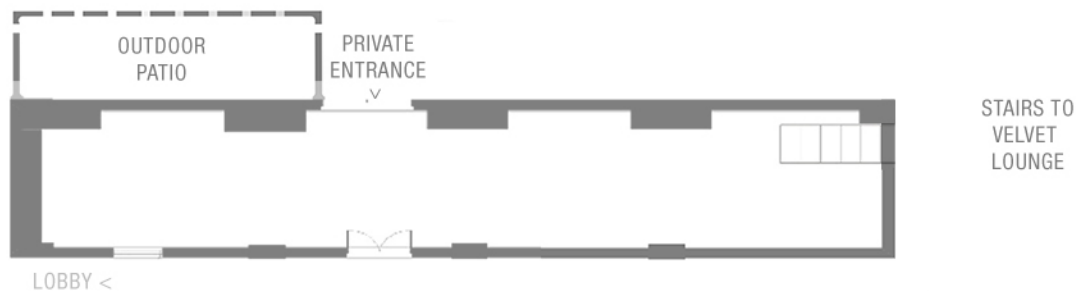
THE GRAND LOBBY

CAPACITY | 200 GUESTS COCKTAIL STYLE | 100 GUESTS SEATED | 1,700 SQ FT +/-



THE CRYSTAL DINING ROOM

CAPACITY | 75 GUESTS COCKTAIL STYLE | 60 GUESTS SEATED | 750 SQFT +/-



THE VELVET LOUNGE ^{MEZZANINE LEVEL}

CAPACITY | 65 GUESTS COCKTAIL STYLE | 750 SQFT +/-

