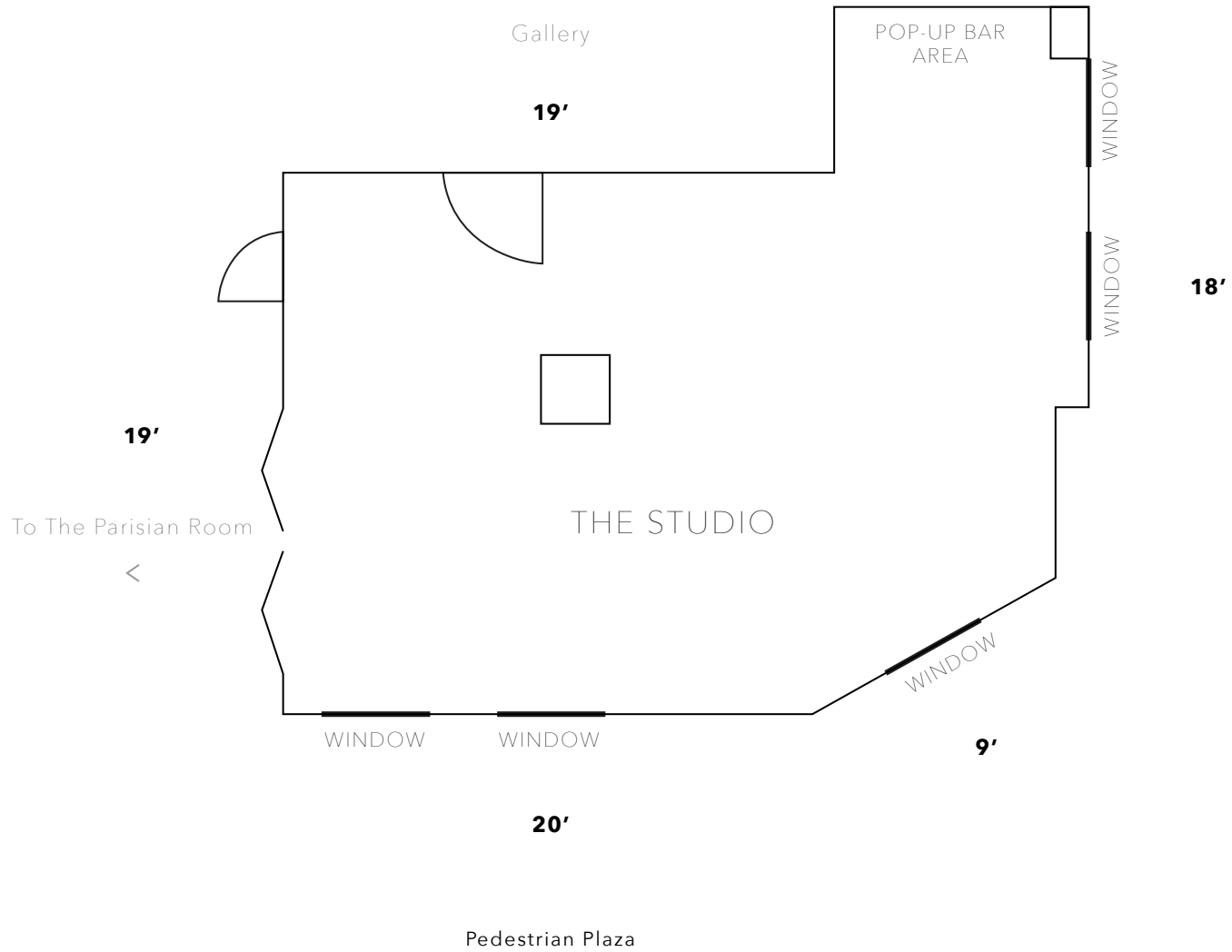




THE STUDIO

l'Atelier

This quaint and elegant corner room overlooking the Historic Culver Studios and the newly built Culver Steps is perfect for intimate gatherings and meetings. Like all the spaces on The Gallery Level, The Studio boasts an abundance of natural light and connects to the rest of the floor as needed. A pop-up bar is available upon request.



THE STUDIO

400 SQ FT | 30 SEATED | 40 COCKTAIL | 30 THEATER